

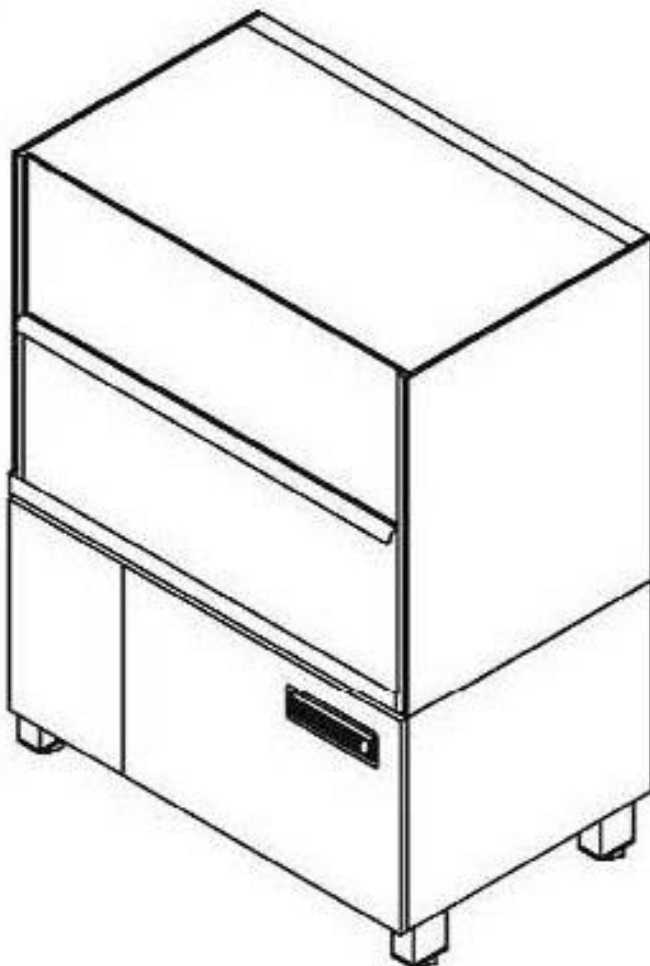
# winterhalter

---

## Spare Parts List GR 66/1

Edited: 05/99  
Revised: 22.02.07

Part-no.: 89005542



## Summary

Water inlet	Page 1 and 2
Tank and tank heating	Page 3 and 4
Water drain	Page 5 and 6
Mediamat	Page 7 and 8
Wash system I	Page 9 and 10
Wash system II	Page 11 and 12
Wash system III	Page 13 and 14
Reversing	Page 15 and 16
Rinsing I	Page 17 and 18
Rinsing II - AquaMatik	Page 19 and 20
Rinsing III - AquaMatik	Page 21 and 22
Rinsing IV	Page 23 and 24
Dosing	Page 25 and 26
Subframe	Page 27 and 28
Paneling and housing	Page 29 and 30
Door	Page 31 and 32
Electrical parts I	Page 33 and 34
Electrical parts II	Page 35 and 36
Cold water pre-rinsing (Option)	Page 37 and 38

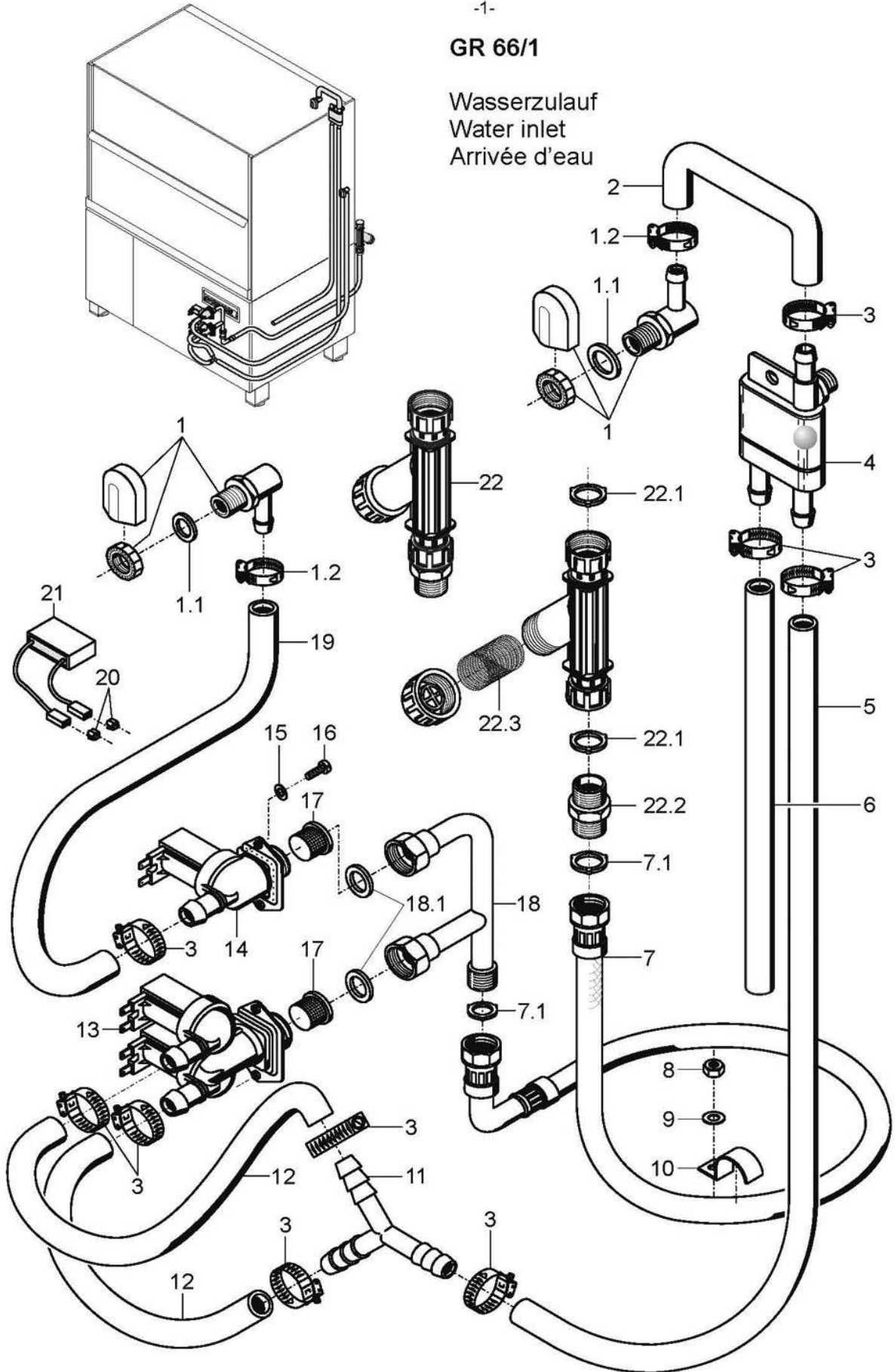
Please note the following points with regard to this list:

See separate list for racks and accessories.

Enter the required quantity in the column marked "Pc." if more than 1 part is installed and if this part is not a standard part.

**GR 66/1**

Wasserszulauf  
Water inlet  
Arrivée d'eau



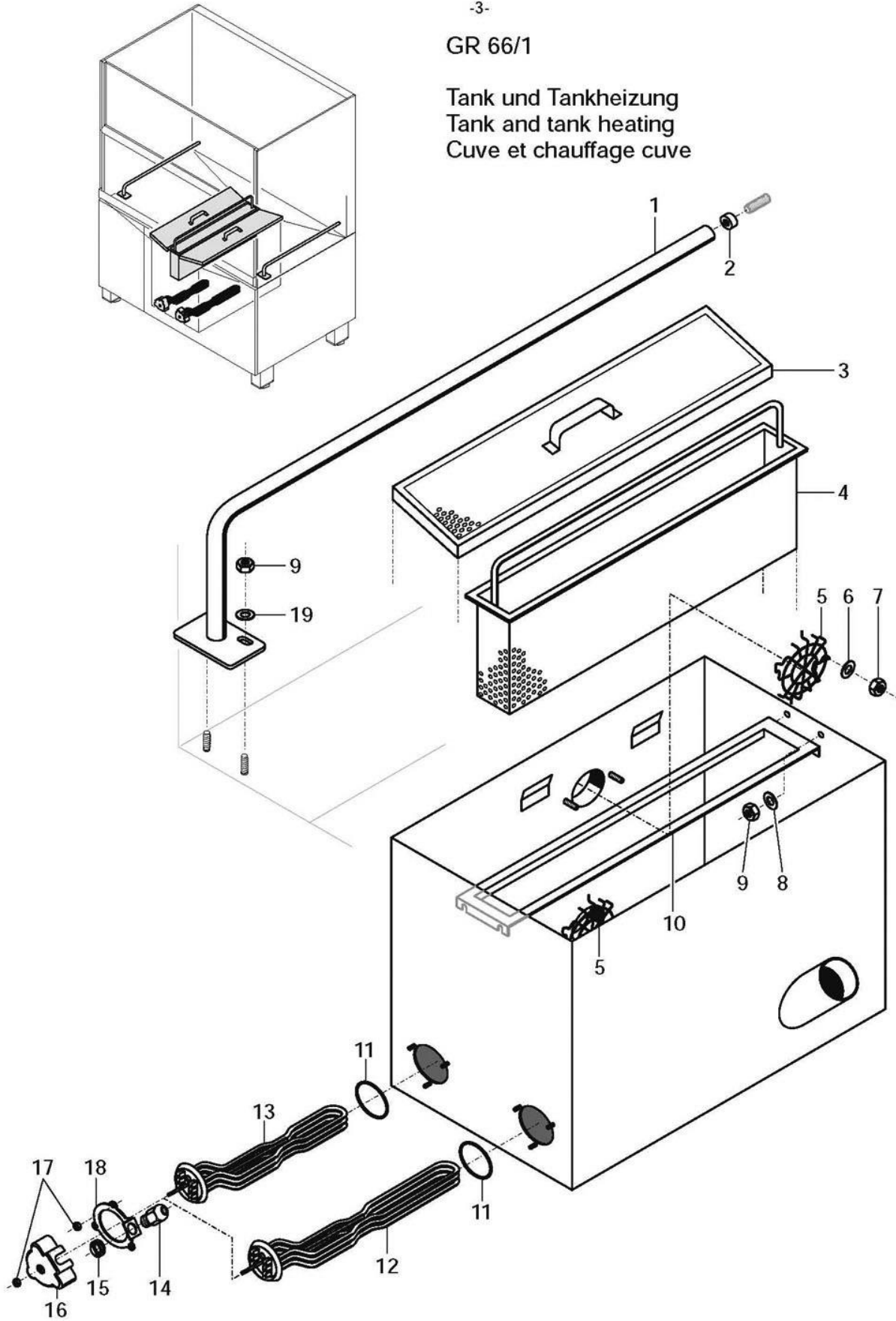
## GR 66/1

### Water inlet

Item	Designation	Part no.	Pc.	Notes
1	Water inlet set	55 31 007	2	incl. item 1.1; 1.2
1.1	Seal; $\varnothing$ 20.5 x $\varnothing$ 28.5 x 2.0	27 01 002		
1.2	Hose clip; $\varnothing$ 14 - 24 x 9	28 02 108		
2	Shaped hose; DN 13 x 4	40 03 053		
3	Hose clip; $\varnothing$ 14 - 24 x 9	28 02 108		
4	Backflow restrictor, top	35 01 193		
5	Hose; DN 13.5 x 3.5 x 2050	40 02 029		per metre
6	Hose; DN 13.5 x 3.5 x 1680	40 02 029		per metre
7	Metal hose; nom. dia. 15 x 1500; G 3/4"	29 01 303		incl. item 7.1
7.1	Seal; $\varnothing$ 16 x $\varnothing$ 24 x 3.0	80002241	2	
8	Hex nut; M 5 self-locking	21 05 302		
9	Washer; $\varnothing$ 5.3 x $\varnothing$ 12 x 0.8	22 02 213		
10	Clip	55 25 017		
11	Y-shaped hose connection piece; $\varnothing$ 13 x 3.5	29 06 526		
12	Hose; DN 13.5 x 3.5 x 240	40 02 029		per metre
13	Double solenoid valve; 220-240V; 50/60Hz	31 06 182		
	Double solenoid valve; 180-220V; 50/60Hz	31 06 200		Japan
14	Solenoid valve; 220-240V; 50/60Hz	31 06 187		
	Solenoid valve; 180-220V; 50/60Hz	31 06 199		Japan
15	Washer; $\varnothing$ 4.3 x $\varnothing$ 12.0 x 1.0	22 05 300		
16	Pan-head screw; M 4 x 8	20 10 210		
17	Dirt trap	31 06 186	2	
18	Connector	65004823		incl. item 7.1; 18.1
18.1	Seal; $\varnothing$ 19.5 x $\varnothing$ 24 x 1.5	27 09 010	2	
19	Hose; DN 13.5 x 3.5 x 1680	40 02 029		per metre
20	Tab connector	31 12 018	2	only with AquaMatik; connect parallel to item 13
21	RC element; 0.15 $\mu$ F; 3,3k $\Omega$	31 13 114		
22	Dirt trap cpl.	80002153		incl. item 22.1 - 22.3
22.1	Seal; $\varnothing$ 16 x $\varnothing$ 24 x 3.0	80002241	2	
22.2	Union stem; G 3/4" x 40; width A/F30	80002167		
22.3	Dirt trap	80002728		
n.p.	Extension hose; 1m	29 01 307		optional extra
n.p.	Seal; $\varnothing$ 16 x $\varnothing$ 24 x 3.0	80002241		optional extra

GR 66/1

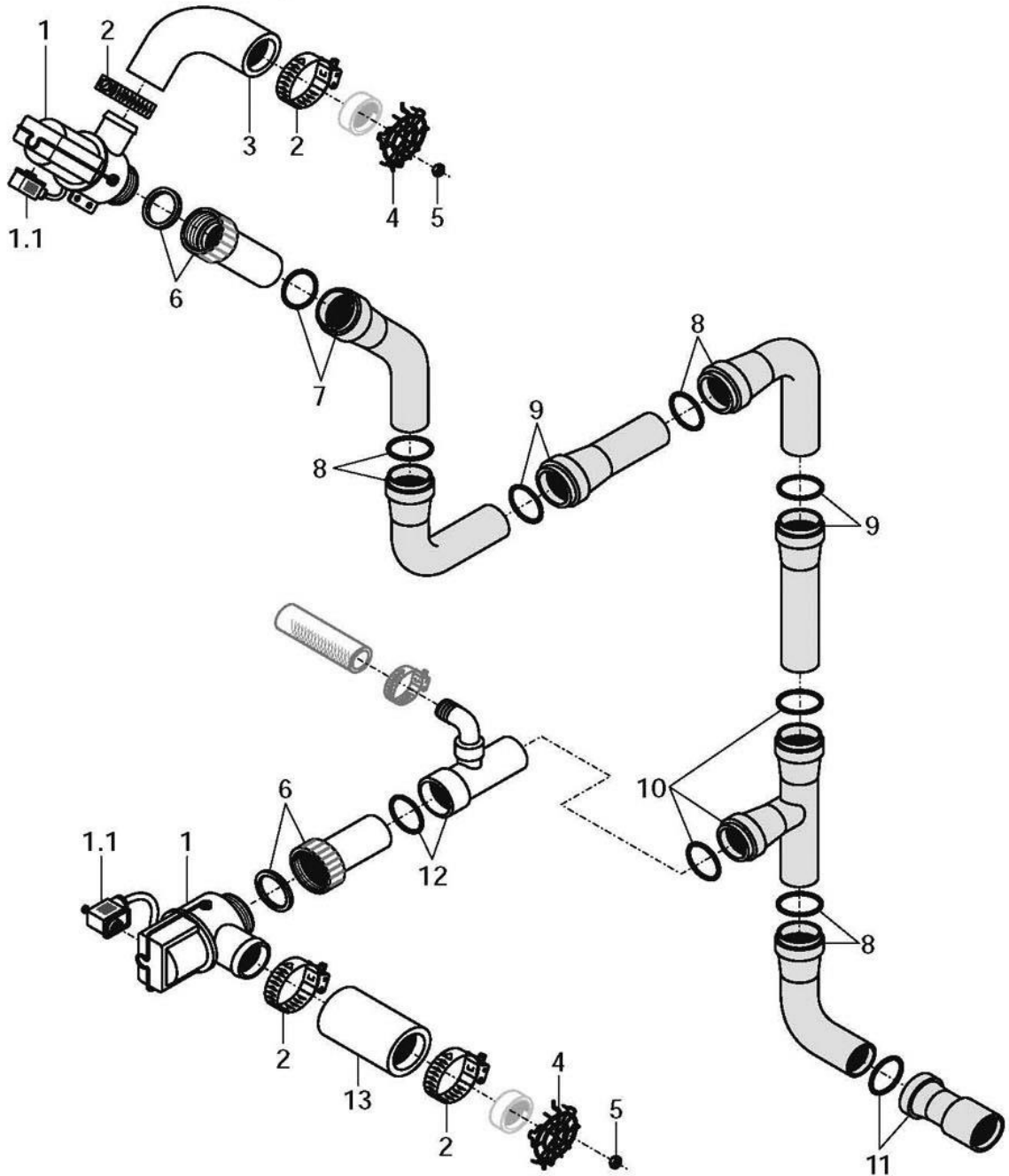
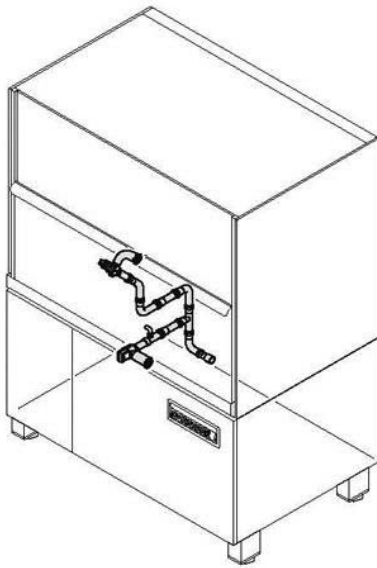
Tank und Tankheizung  
Tank and tank heating  
Cuve et chauffage cuve





GR 66/1

Wasserablauf  
Water drain  
Ecoulement d'eau

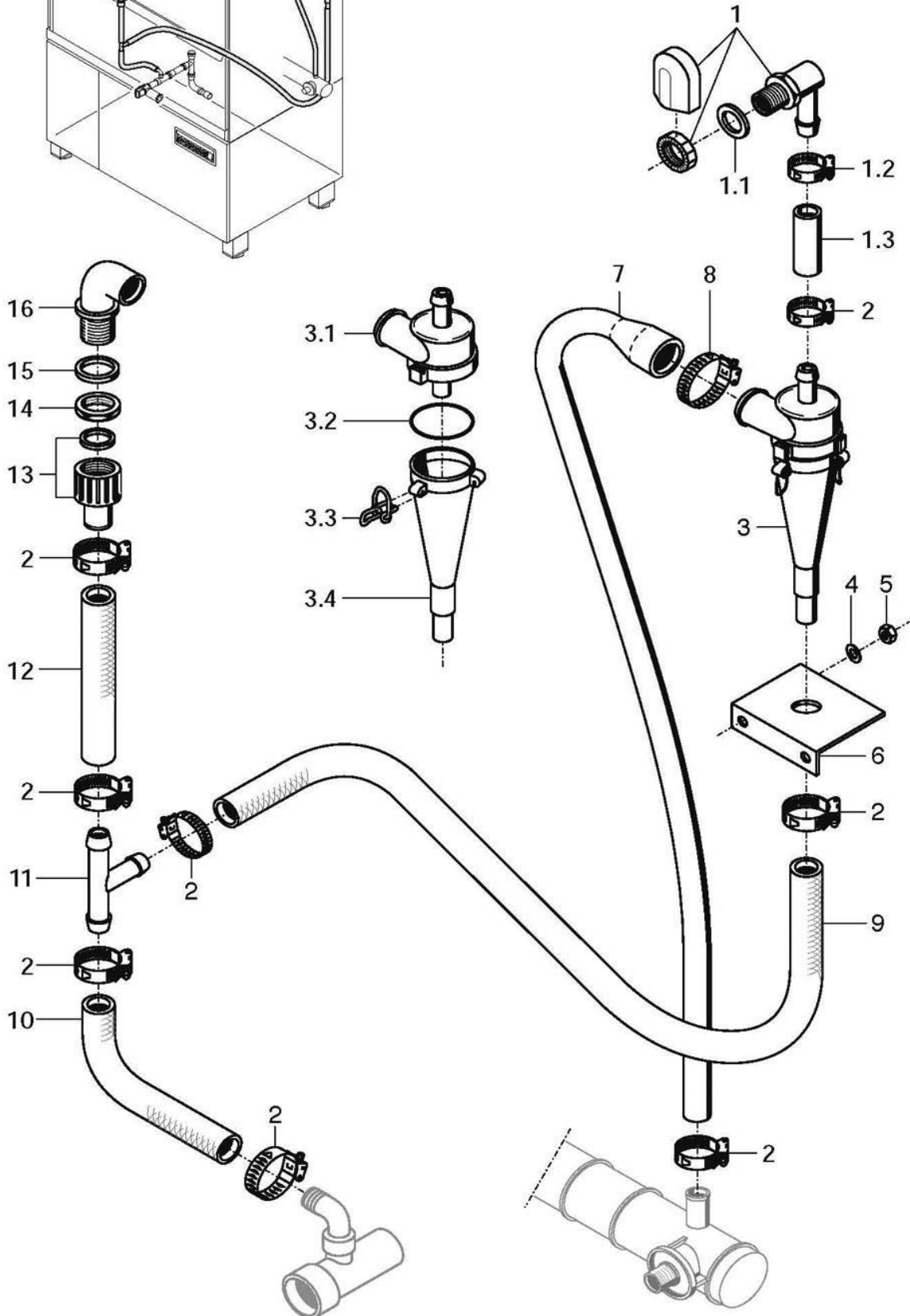
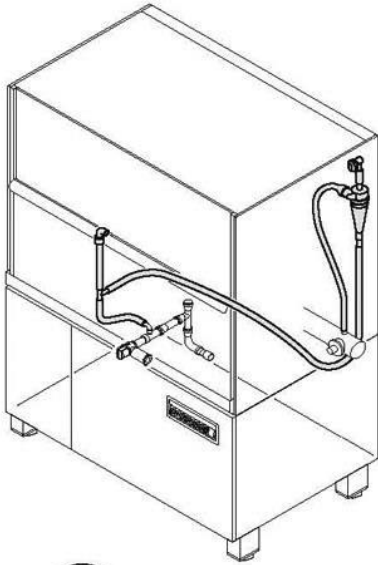






GR 66/1

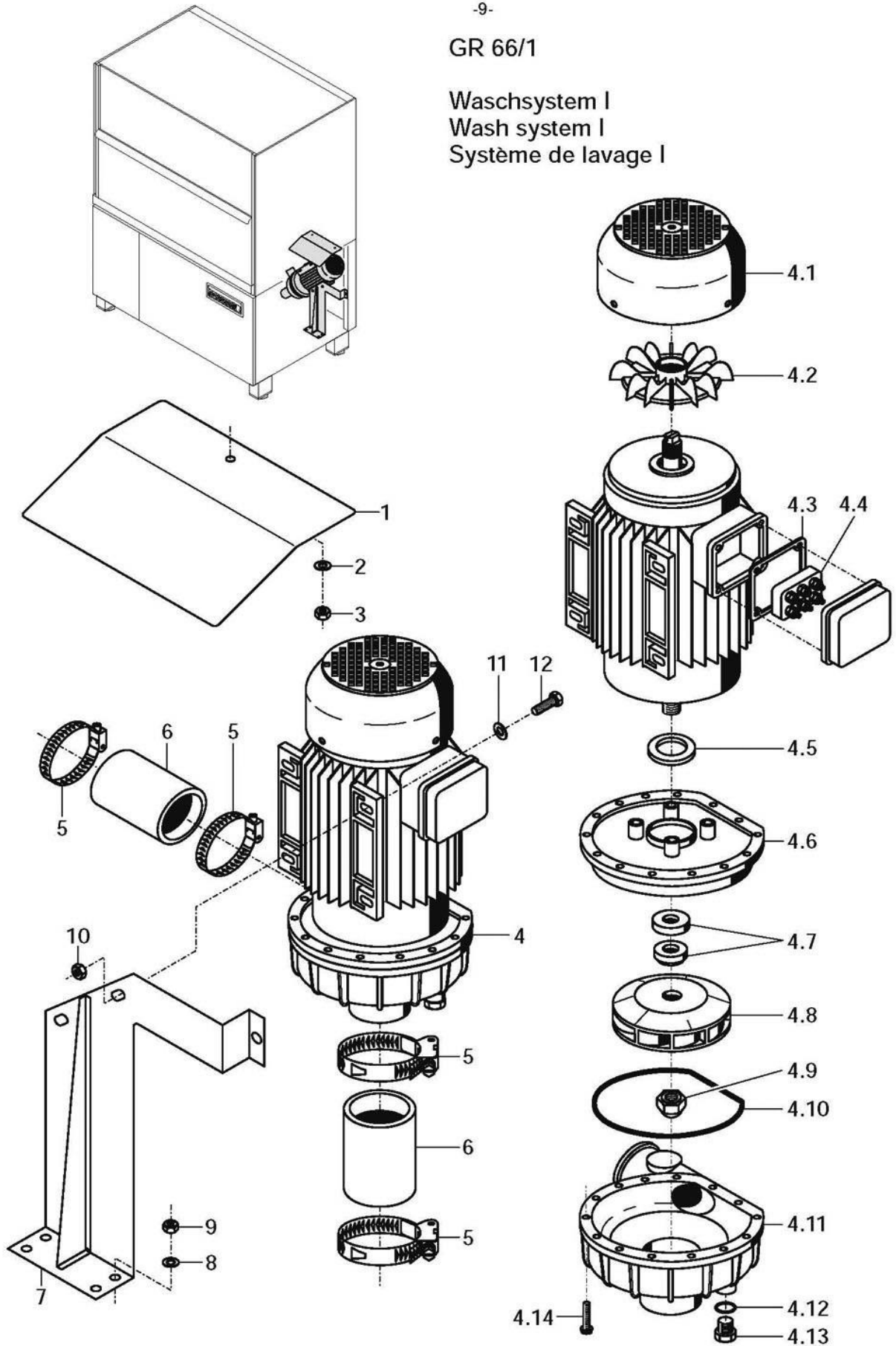
Mediamat  
Mediamat  
Médiamat





GR 66/1

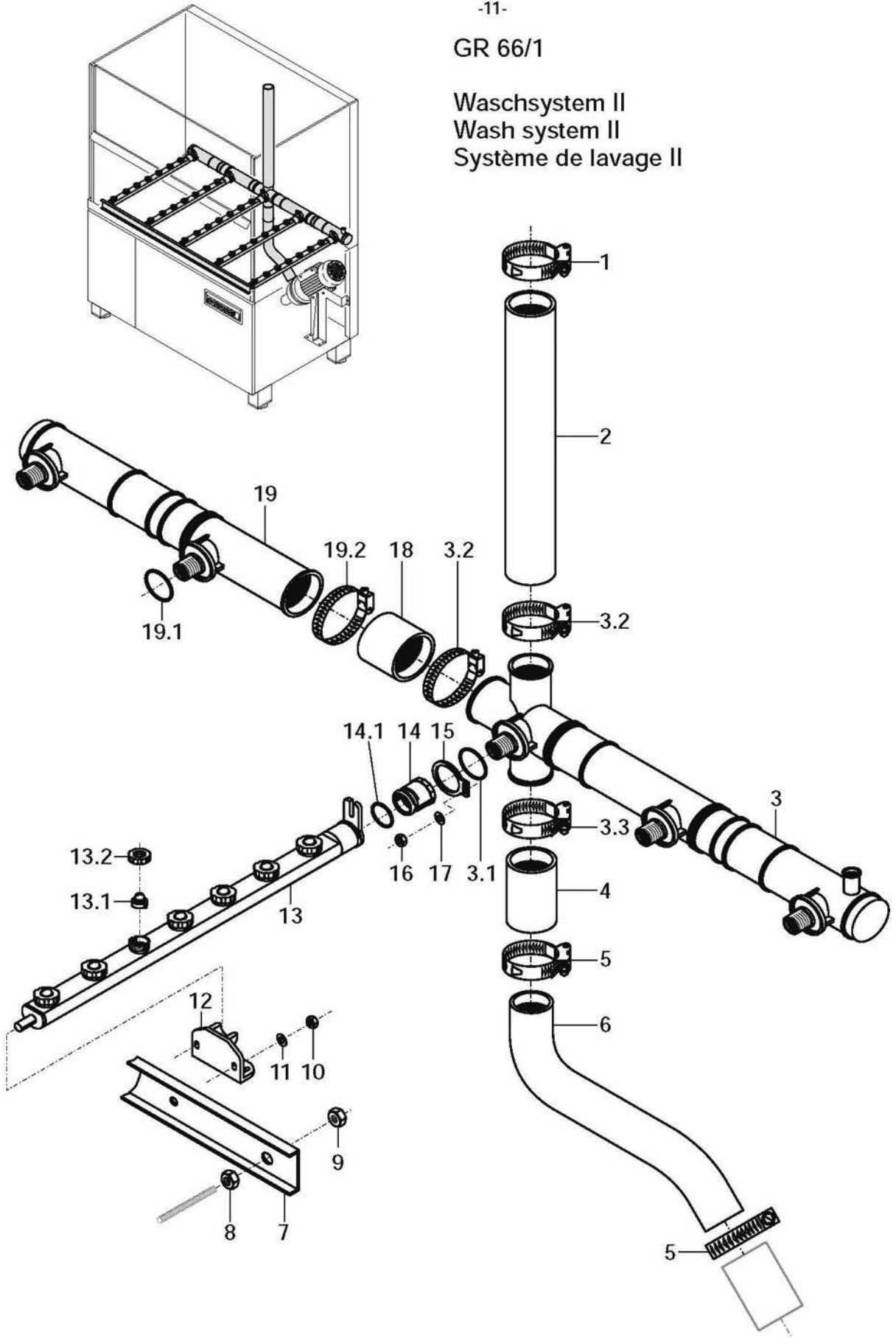
Waschsystem I  
Wash system I  
Système de lavage I





GR 66/1

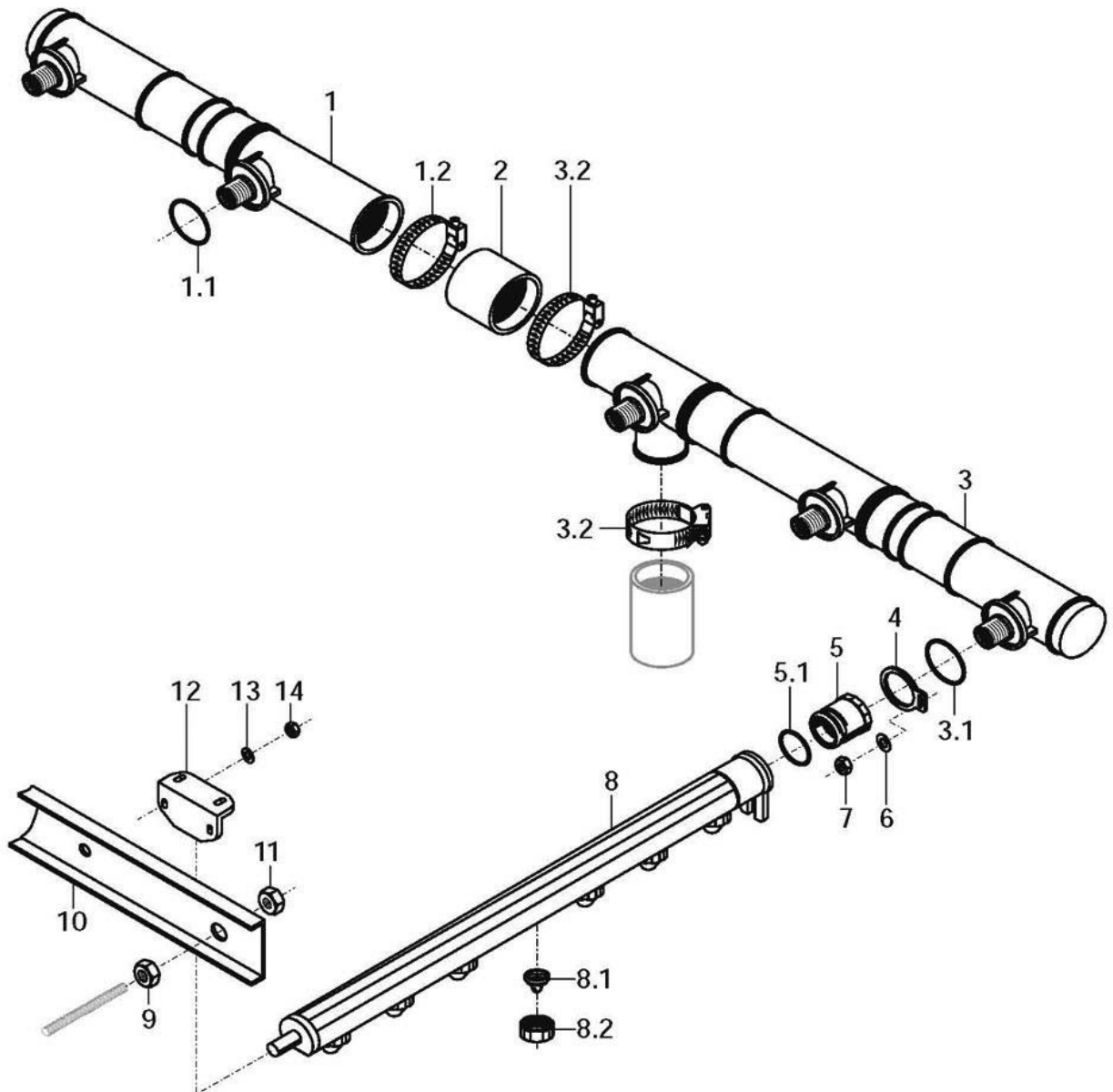
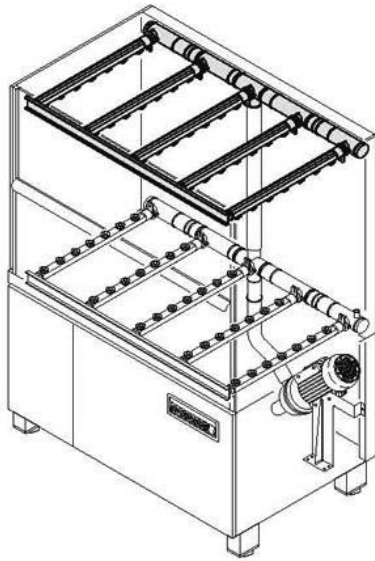
Waschsystem II  
Wash system II  
Système de lavage II





GR 66/1

Waschsystem III  
Wash system III  
Système de lavage III

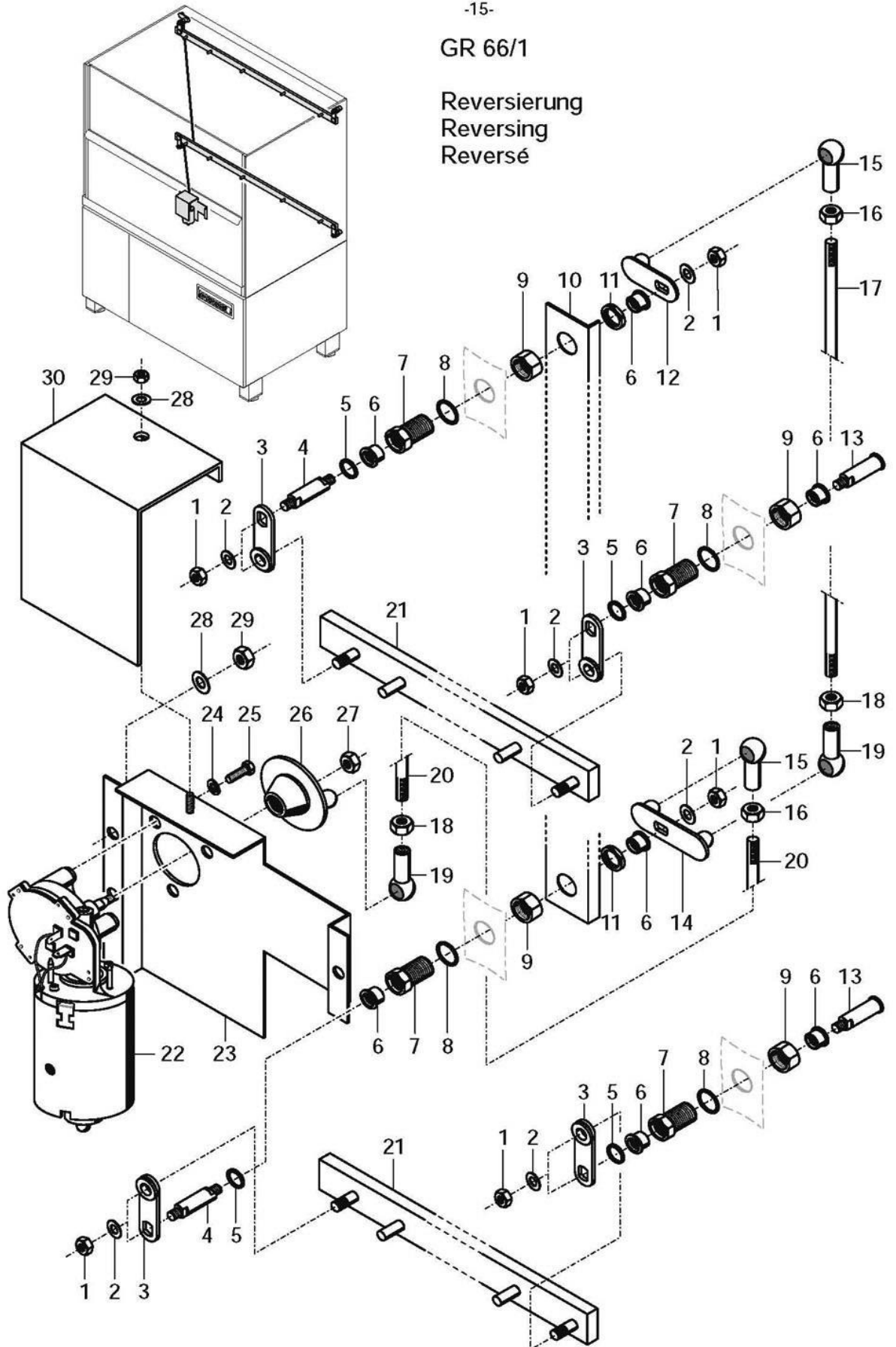






# GR 66/1

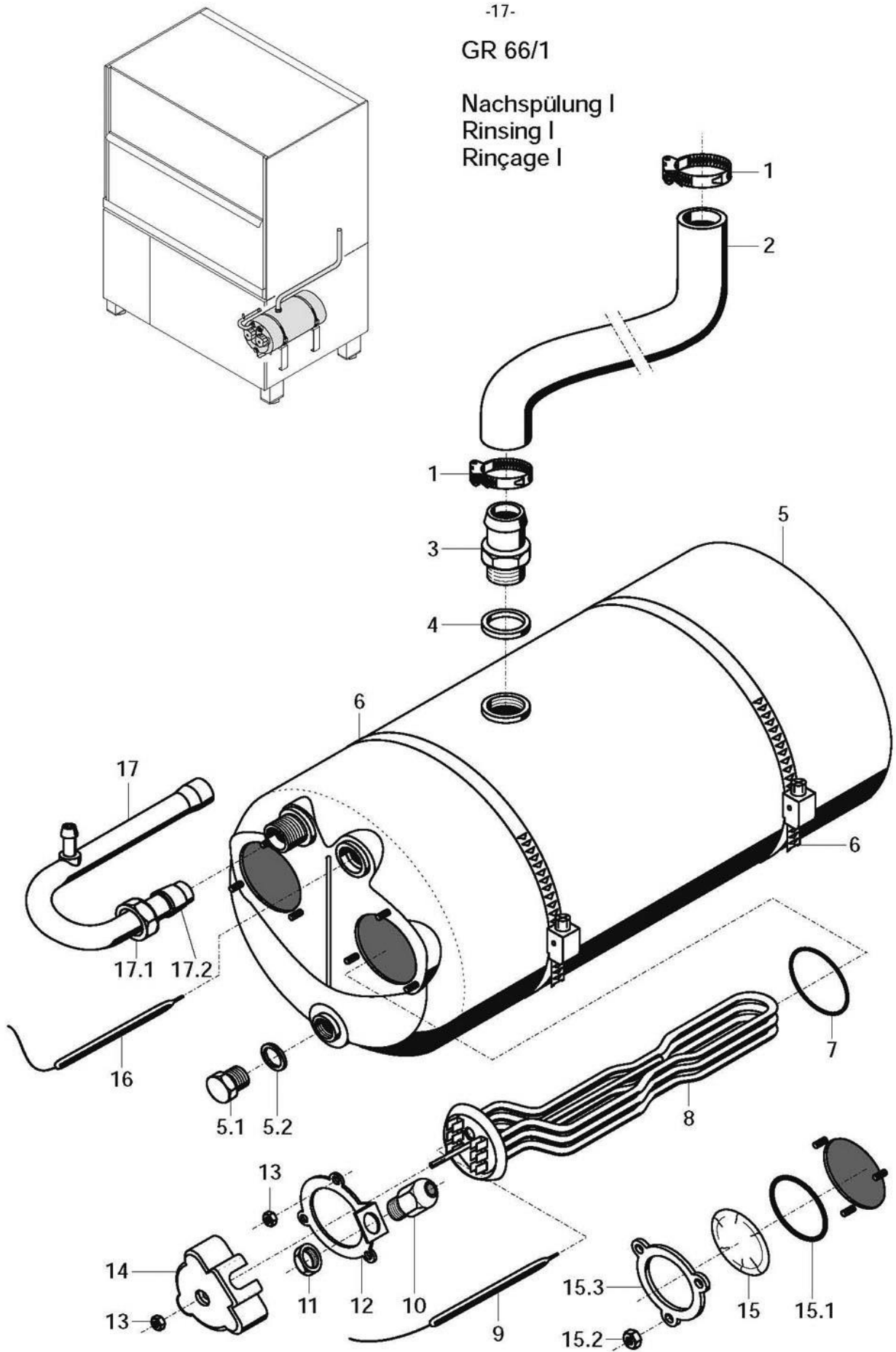
Reversierung  
Reversing  
Reverse





GR 66/1

Nachspülung I  
Rinsing I  
Rinçage I



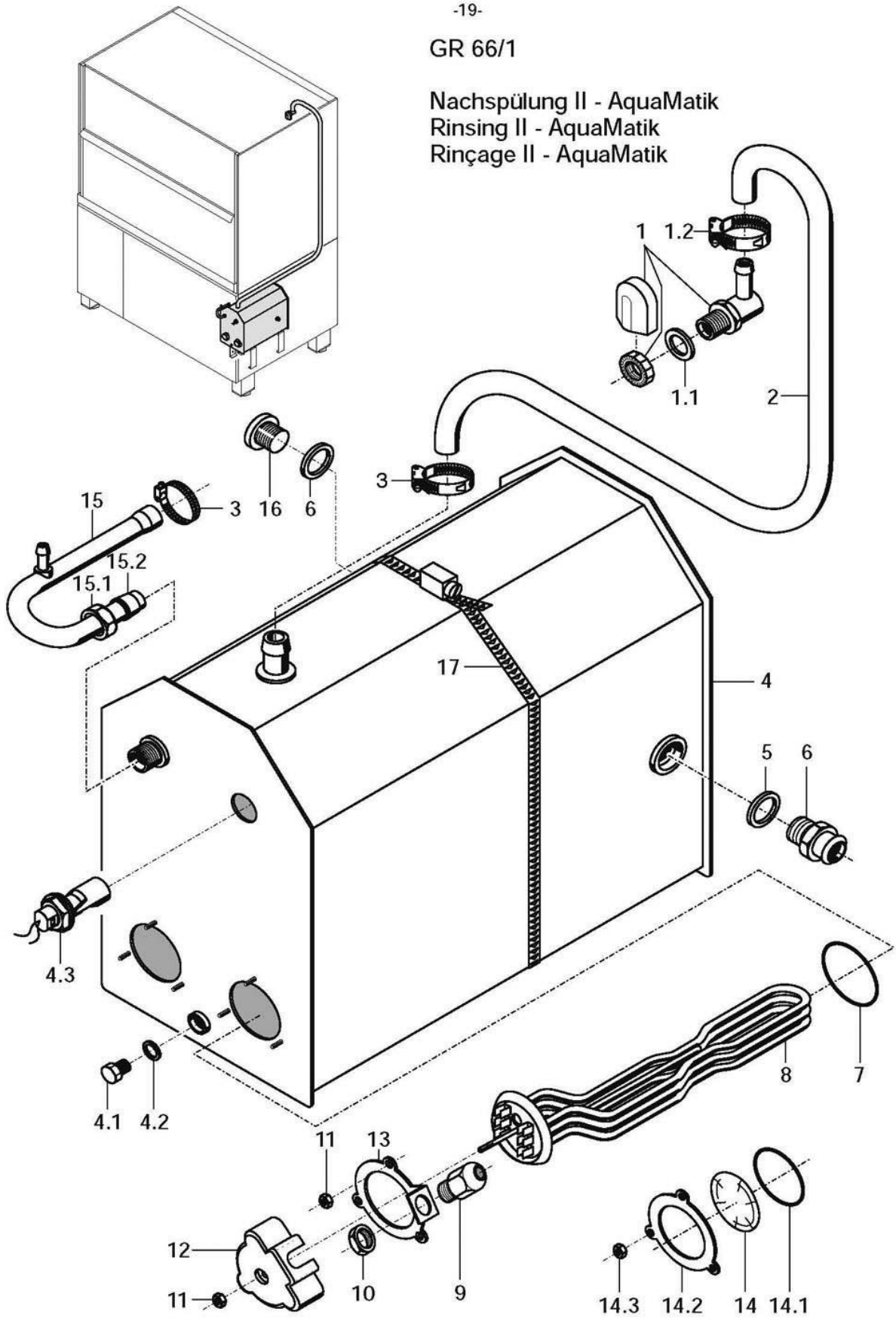


GR 66/1

Nachspülung II - AquaMatik

Rinsing II - AquaMatik

Rinçage II - AquaMatik



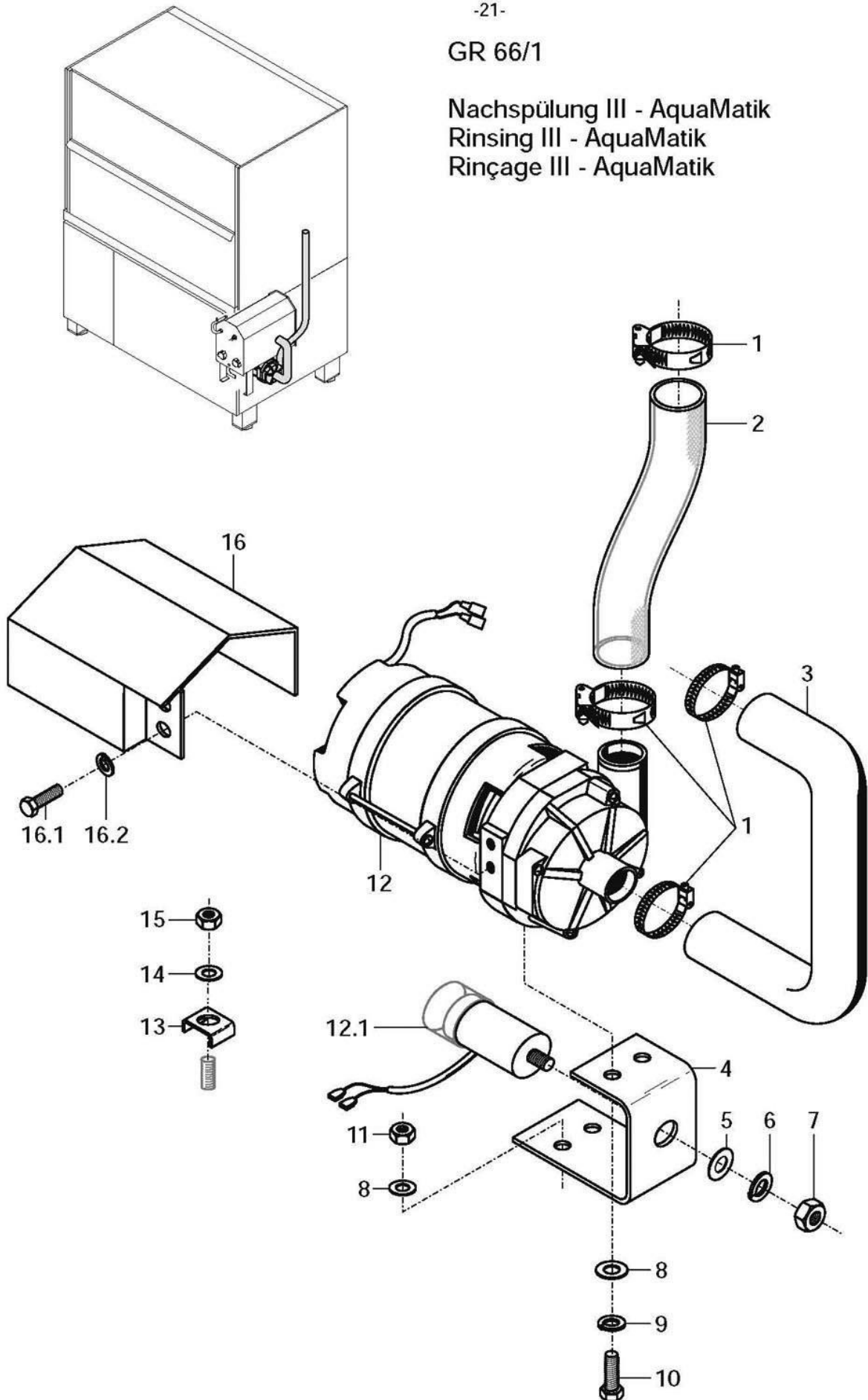
## GR 66/1

### Rinsing II - AquaMatik

Item	Designation	Part no.	Pc.	Notes
1	Water inlet set	55 31 007		incl. item 1.1; 1.2
1.1	Seal; $\varnothing$ 20.5 x $\varnothing$ 28.5 x 2.0	27 01 002		
1.2	Hose clip; $\varnothing$ 14 - 24 x 9	28 02 108		
2	Hose bend	40 03 056		adapt
3	Hose clip; $\varnothing$ 14 - 24 x 9	28 02 108		
4	Boiler frame cpl., non-pressurised	80002128		incl. item 4.1 - 4.3
4.1	Hex-head screw; M 10 x 16	20 01 352		
4.2	Seal; $\varnothing$ 10 x $\varnothing$ 18 x 1.5	27 03 003		
4.3	Float switch; 250V; 15VA	55 28 255		
n.P	Seal for float switch	31 26 036		
5	Seal; $\varnothing$ 21 x $\varnothing$ 28 x 2.0	27 09 011	2	
6	Hose stem; $\varnothing$ 26 x 41; G 1/2"; width A/F 27	80001403		
7	O-ring; 46 x 6.0	27 07 015		
8	Heating element cranked; 6.0kW; 230V/400V/3	31 03 017		
	Heating element cranked; 6.0kW; 240V/420V/3	31 03 043		
	Heating element cranked; 6.0kW; 200V/346V/3	31 03 046		
	Heating element cranked; 9.0kW; 230V/400V/3	31 03 018		
	Heating element cranked; 9.0kW; 240V/420V/3	31 03 057		
	Heating element cranked; 3.0kW; 200V/346V/3	31 03 097		
9	Cable gland; PG 13.5	31 10 040		
10	Hex nut; PG 13.5	31 10 041		
11	Hex nut; M 5	21 01 203		
12	Cap for heating element	31 03 014		
13	Clamping plate cpl.	55 19 018		
14	Blank flange; $\varnothing$ 60	60002787		incl. item 14.1 - 14.2
14.1	O-ring; 46 x 6.0	27 07 015		
14.2	Clamping plate; galvanised	01 17 003		
14.3	Hex nut; M 5	21 01 203	3	
15	Boiler inlet bend cpl.	55 09 054		incl. item 15.1; 15.2
15.1	Cap nut; G 1/2" x $\varnothing$ 12.2; width across flats 24	29 07 201		
15.2	Cutting ring; $\varnothing$ 15 x 10; nom. dia. 12	29 07 300		
16	Locking screw; G 1/2"	30 08 303		
17	Hose clip; $\varnothing$ 212 - $\varnothing$ 232 x 12	28 02 136		

GR 66/1

Nachspülung III - AquaMatik  
Rinsing III - AquaMatik  
Rinçage III - AquaMatik

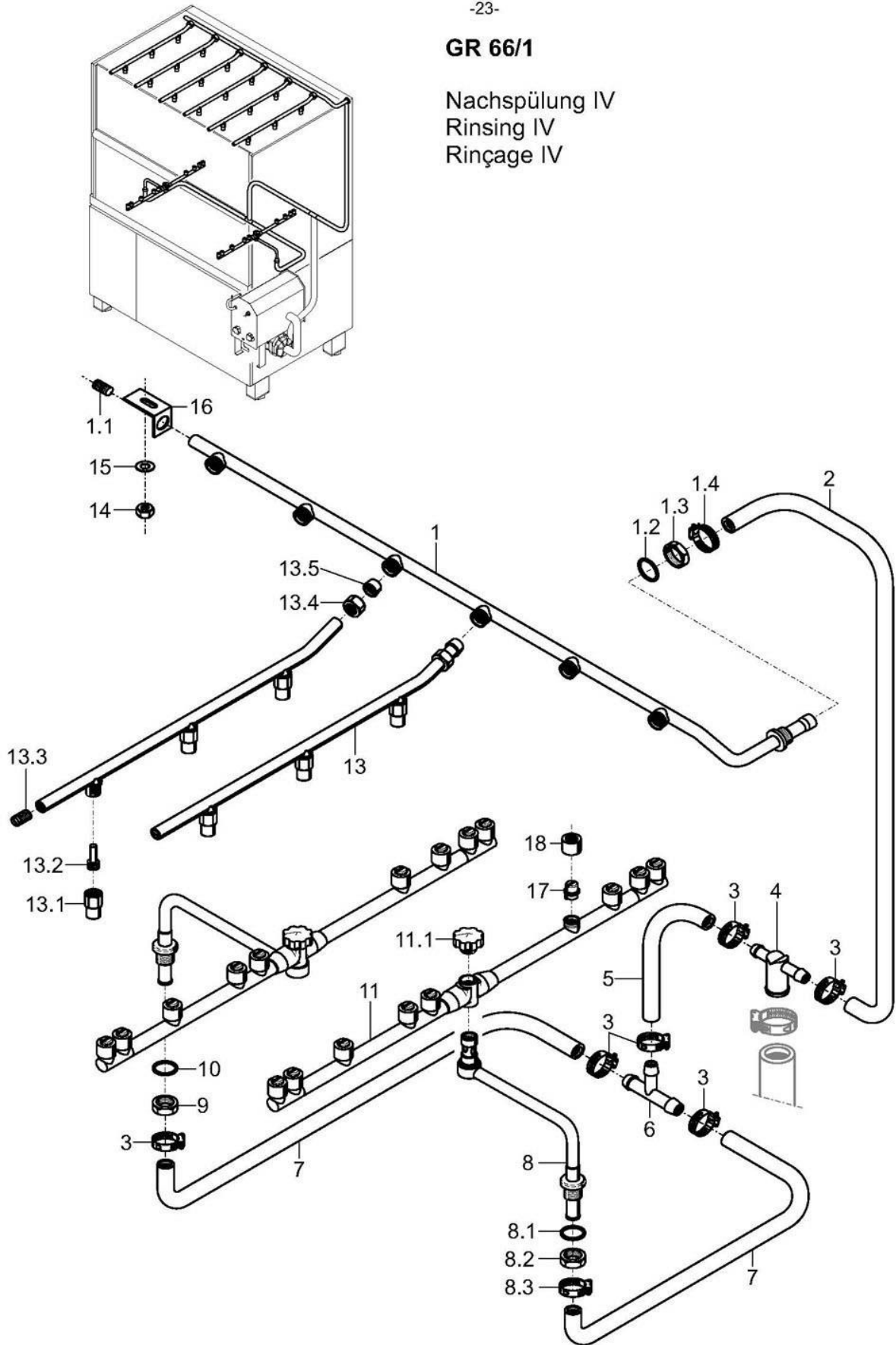






### GR 66/1

Nachspülung IV  
Rinsing IV  
Rinçage IV



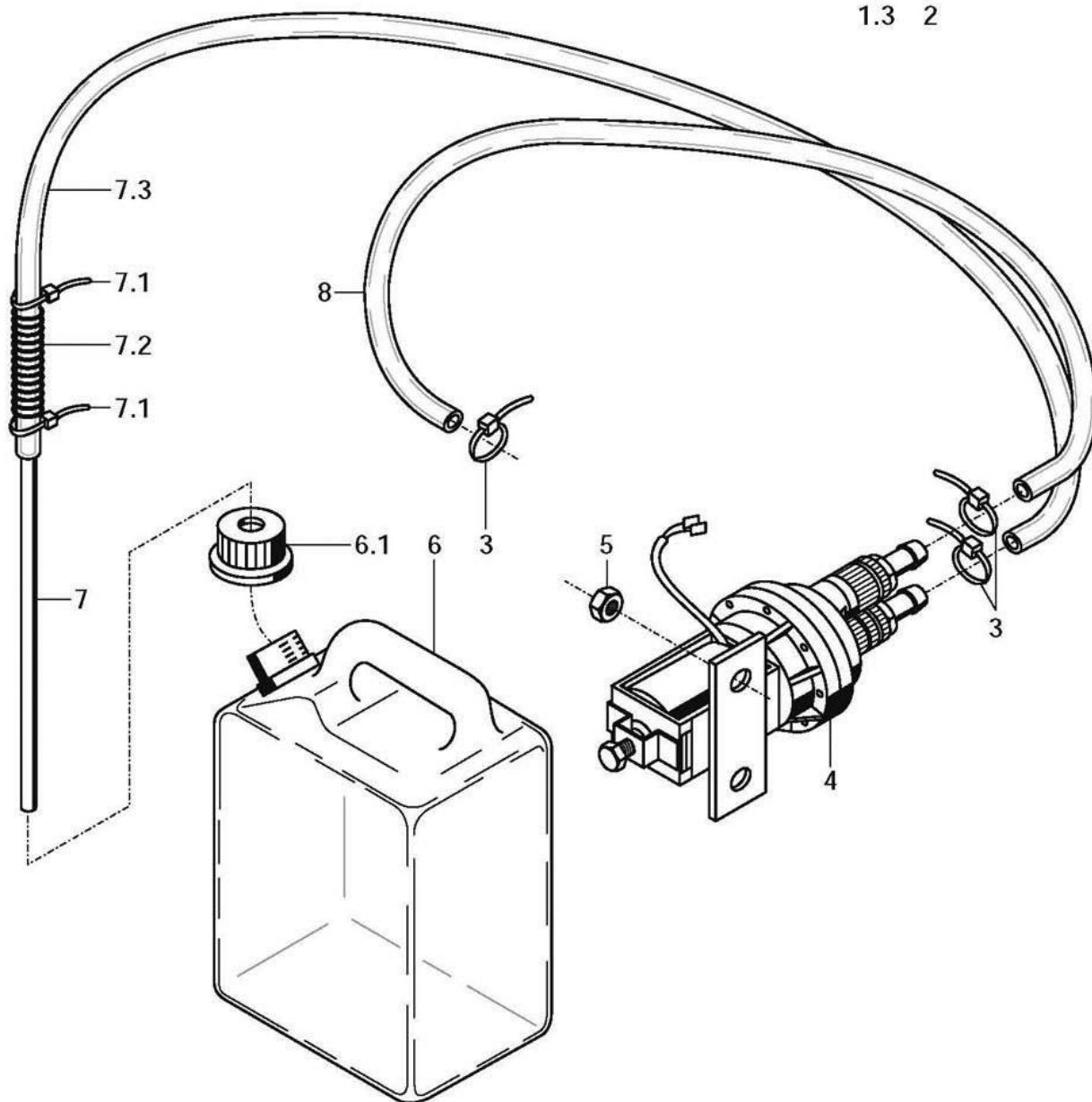
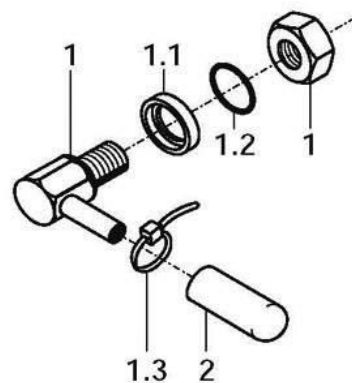
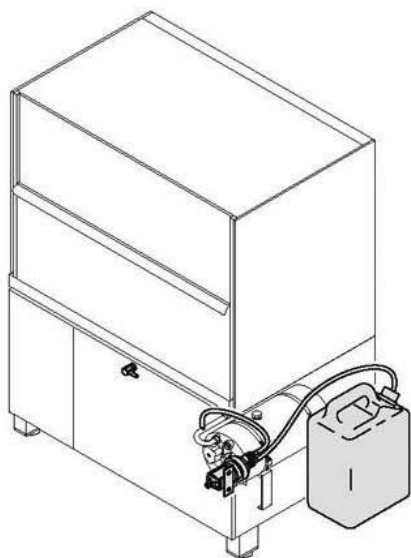
**GR 66/1**

Rinsing IV

Item	Designation	Part no.	Pc.	Notes
1	Rinse manifold; top	65004819		incl. item 1.1 - 1.4
1.1	Grub screw; M 11 x 1.0 x 20	20 30 503		
1.2	O-ring; 16 x 2.5	27 07 001		
1.3	Hex nut; G 3/8"	30 09 200		
1.4	Hose clip; $\varnothing$ 14 - 24 x 9	28 02 108		
2	Shaped hose DN 12.5 x 4.0 ; 40 x 1400	60001610		cut to 970mm
3	Hose clip; $\varnothing$ 14 - 24 x 9	28 02 108		
4	Tee piece; $\varnothing$ 25 x $\varnothing$ 14.5 x 14.5	62001329		
5	Hose; DN 13.5 x 3.5 x 360	40 02 029		per metre
6	Hose connection tee; $\varnothing$ 13	29 06 508		
7	Shaped hose; nom. dia. 12.5 x 4.0; 34.7 x 869.7	62001434	2	adapt
8	Revolving arm support	65004811	2	incl. item 8.1 - 8.3
8.1	O-ring; 20 x 3.5	27 07 040		
8.2	Hex nut; G 1/2" x 8.0; width A/F 27	30 09 201		
8.3	Hose clip; $\varnothing$ 14 - 24 x 9	28 02 108		
9	Hex nut; G 1/2" x 8.0; width A/F 27	30 09 201		
10	O-ring; 20 x 3.5	27 07 040		
11	Revolving arm; cpl.	61006244	2	incl. item 11.1
11.1	Screw cap	61005681		
13	Upper rinse pipe cpl.; 1st nozzle 30mm from front	65004011	3	incl. item 13.1 - 13.5
	Upper rinse pipe cpl.; 1st nozzle 120mm from front	65004012	3	
13.1	Nozzle cap; $\varnothing$ 14.6 x 21	65002765	18	
13.2	Nozzle swirl device; $\varnothing$ 8 x 18.8	65002764	18	
13.3	Grub screw; M 9 x 40	20 30 502	6	
13.4	Cap nut; G 3/8" x $\varnothing$ 10.2	29 07 200	6	
13.5	Clamping ring; $\varnothing$ 10.2	29 07 500	6	
14	Hex nut; M 5 self-locking	21 05 302		
15	Washer; $\varnothing$ 5.3 x $\varnothing$ 12 x 0.8	22 02 213		
16	Angle	65003117		
17	Flat-jet nozzle; size 8	62002811	7	
18	Cap nut	62002812	7	

### GR 66/1

Dosierung  
Dosing  
Dosage



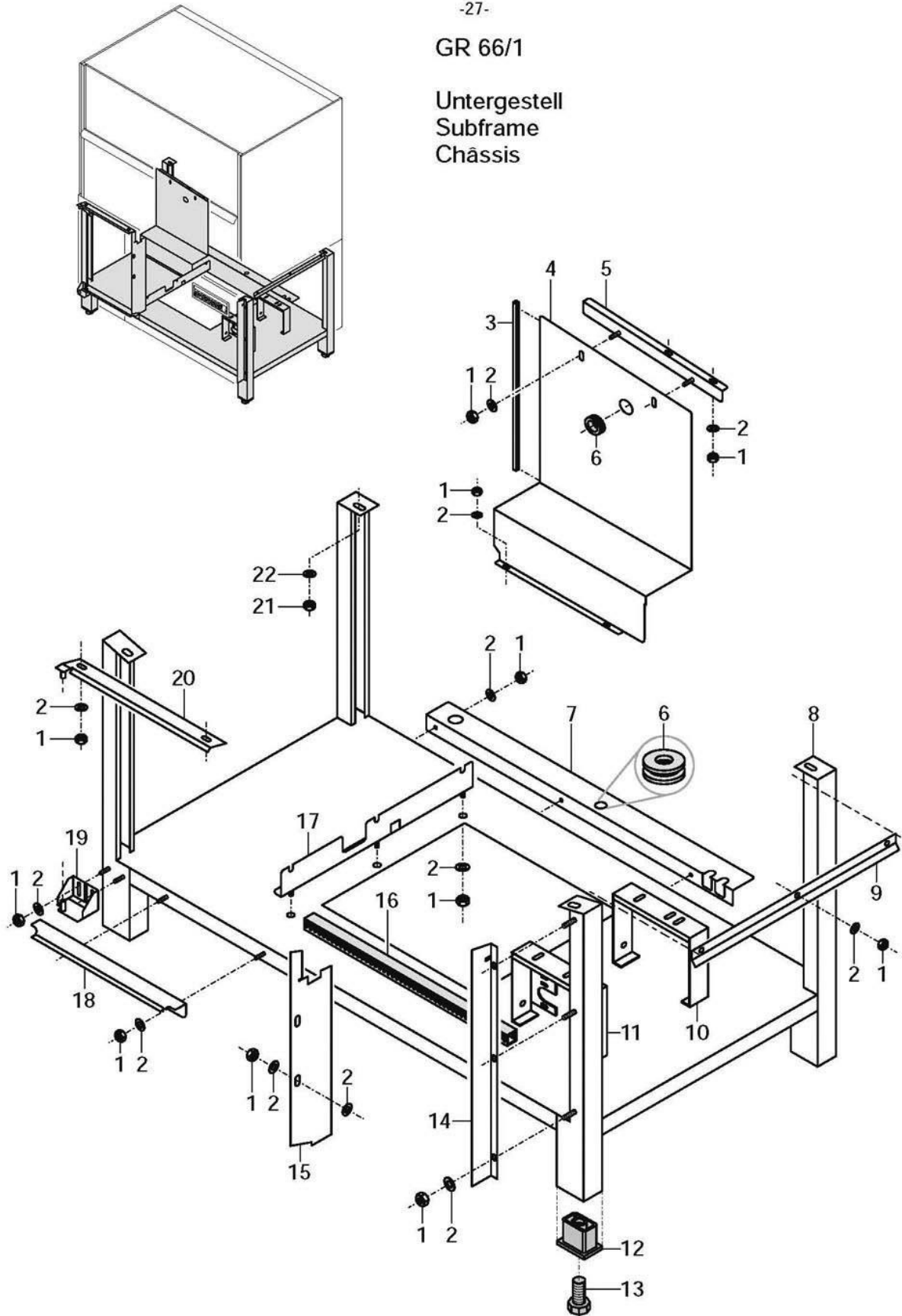
**GR 66/1**

Dosing

Item	Designation	Part no.	Pc.	Notes
1	Set dispensing nipple for detergent	62002869		incl. item 1.1 - 1.3
1.1	Back-up ring; ø 18 x 5	62002874		
1.2	O-ring; 10 x 2.5	27 07 030		
1.3	Cable binder; 162 x 2.5	31 20 014		
2	Cap; ø 6 x 15	35 03 023		
3	Cable binder; 162 x 2.5	31 20 014		
4	ELT 10 GS dosing device cpl., left; 180-254V; 50/60Hz	80000554		see separate spare parts list
5	Hex nut; M 5 self-locking	21 05 302		
6	Clear rinse container cpl.; 3 litre	35 02 004		incl. item 6.1; OPTION
6.1	Sealing cap	35 02 023		drill, if necessary
7	Suction stick, cpl.	55 25 051		incl. item 7.1 - 7.3
7.1	Cable binder; 162 x 2.5	31 20 014	2	
7.2	Compression spring ø 0.8 x ø 10 x 280	62002419		
7.3	Hose; nom. dia. 5 x 1.5 x 2500	40 01 024		per metre
8	Hose; nom. dia. 5 x 1.5 x 770	40 01 024		per metre

GR 66/1

Untergestell  
Subframe  
Chassis



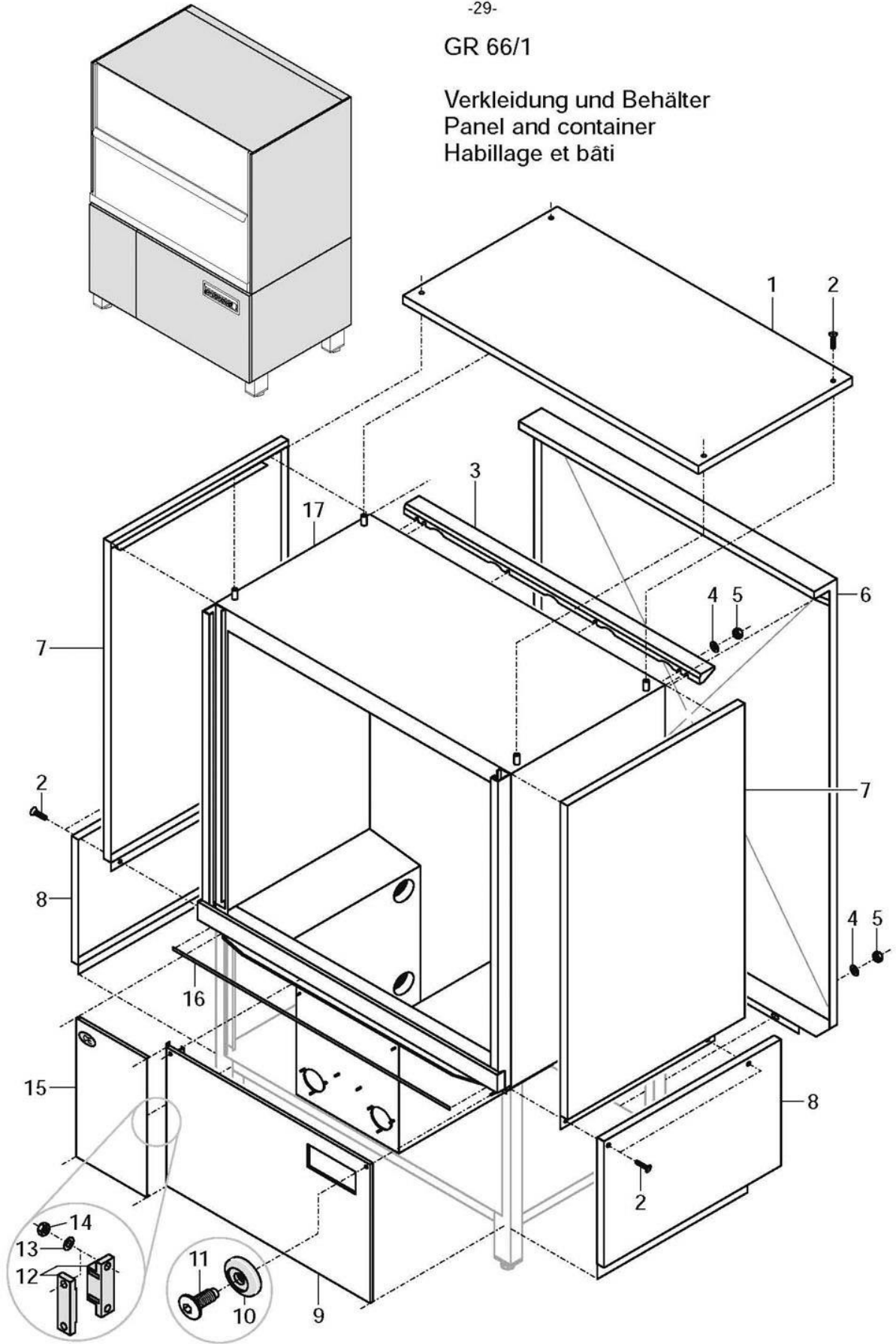
**GR 66/1**

Subframe

Item	Designation	Part no.	Pc.	Notes
1	Hex nut; M 5 self-locking	21 05 302		
2	Washer; $\varnothing$ 5.3 x $\varnothing$ 12 x 0.8	22 02 213		
3	Profile packing; 0.5 – 2.0mm; 440mm long	40 06 006		per metre
4	Support	65004782		
5	Angle	65004784		
6	Nozzle; $\varnothing$ 20 x $\varnothing$ 36 x 9	31 10 100	2	
7	Angle	65004598		
8	Supporting frame	65004471		
9	Angle	65004771		right side; lower edge of housing
10	Support	65004070		
11	Support	65004618		
12	Threaded insert; G 3/4"; 42 x 62 x 50	35 01 063	4	
13	Foot cleat; G 3/4"; 32 x 32 x 100	35 01 064	4	
14	Splash angle, right	65004773		
15	Guard plate	65004805		
16	Cable duct; 19 x 19 x 750	31 20 100		per metre
17	Angle	65004579		
18	Angle	65004520		
19	Lower angle	65003238		
20	Angle	65004538		
21	Hex nut; M 8 self-locking	21 05 306	4	
22	Washer; $\varnothing$ 8.4 x $\varnothing$ 17 x 1.6	22 01 303	4	

GR 66/1

Verkleidung und Behälter  
Panel and container  
Habillage et bâti

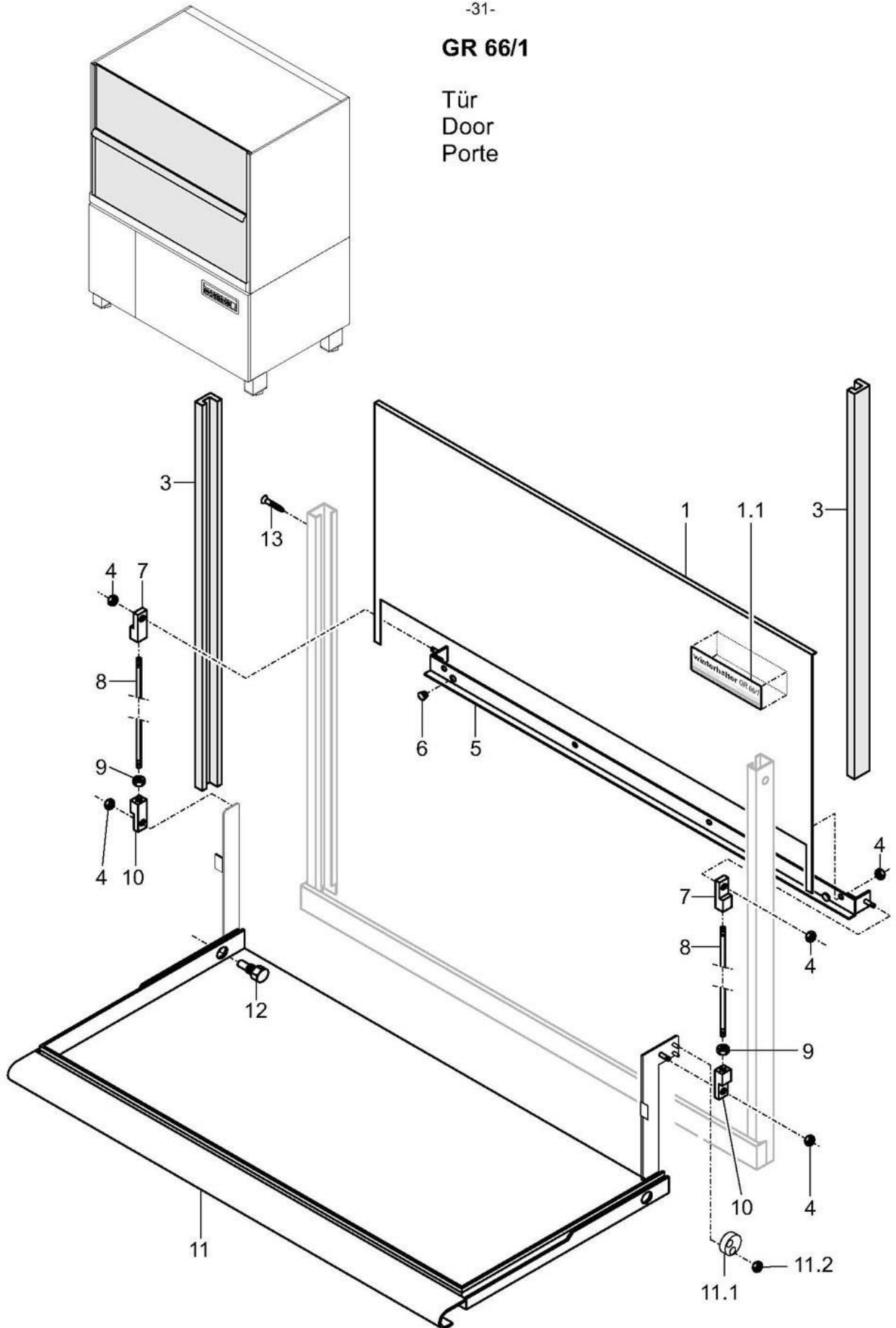






# GR 66/1

Tür  
Door  
Porte



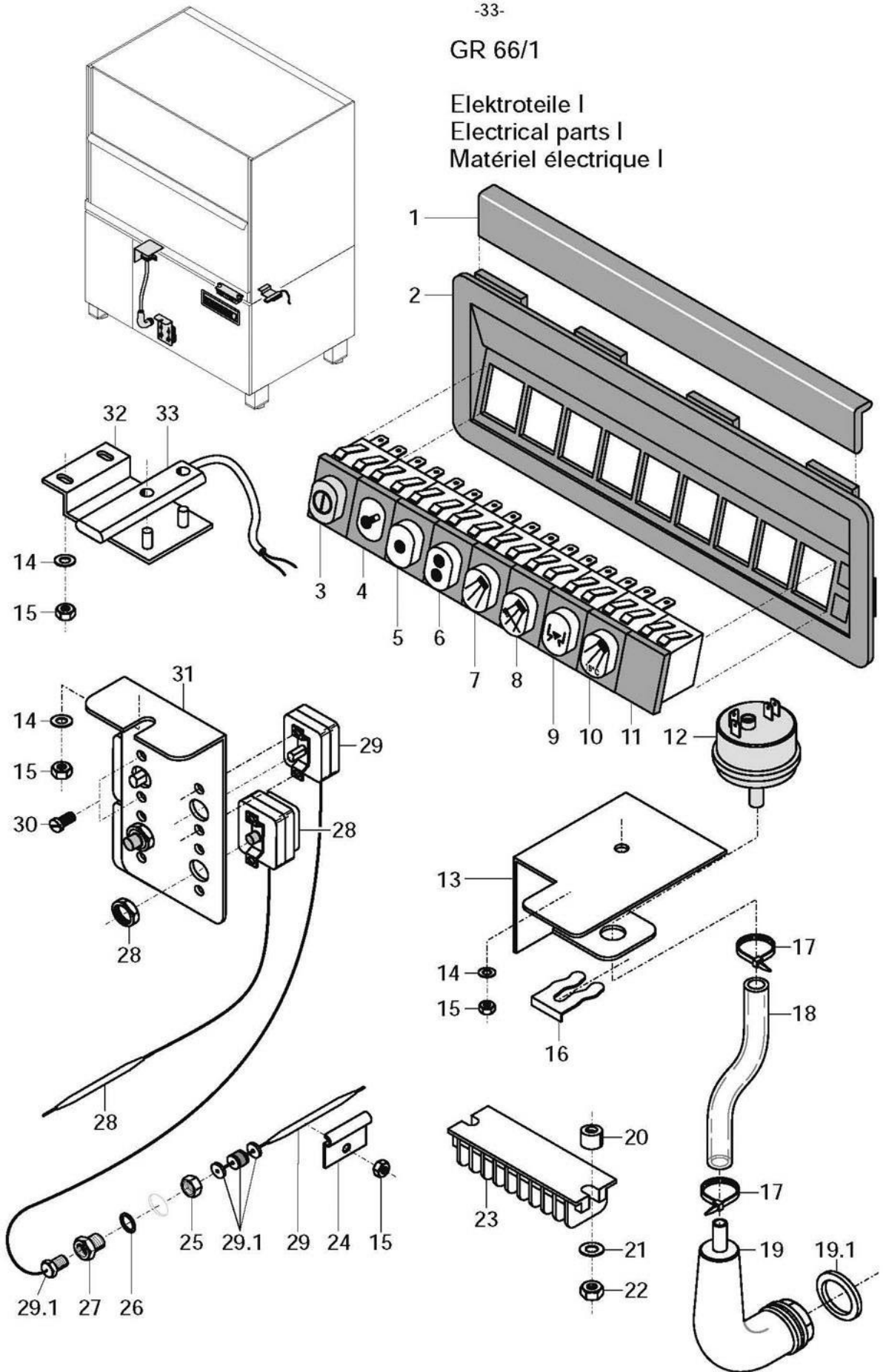
**GR 66/1**

Door

Item	Designation	Part no.	Pc.	Notes
1	Lifting door	65004445		incl. item 1.1
1.1	Sign; „Winterhalter GR 66/1“	65004466		
3	Guide profile; 33.75 x 39 x 915	65004448	2	
4	Hex nut; M 6 self-locking	21 05 304		
5	Hanging rail	65004446		
6	Pushbutton buffer; ø 13 x 8.5	40 06 015	2	
7	Adjusting knob; left-threaded	65001617	2	
8	Door push rod; ø 8 x 504	65004184	2	
9	Hex nut; M 8	21 01 305		
10	Adjusting knob; right-threaded	65001616	2	
11	Folding door	65004447		incl. item 11.1, 11.2
11.1	Kit magnet holder	55 28 291		incl. magnet
11.2	Hex nut; M 5 self-locking	21 05 302		
12	Bearing bolt, width AF 15 x 26	65001537	2	
13	Sheet-metal screw; St 2.9 x 13	20 20 302		

GR 66/1

Elektroteile I  
Electrical parts I  
Matériel électrique I



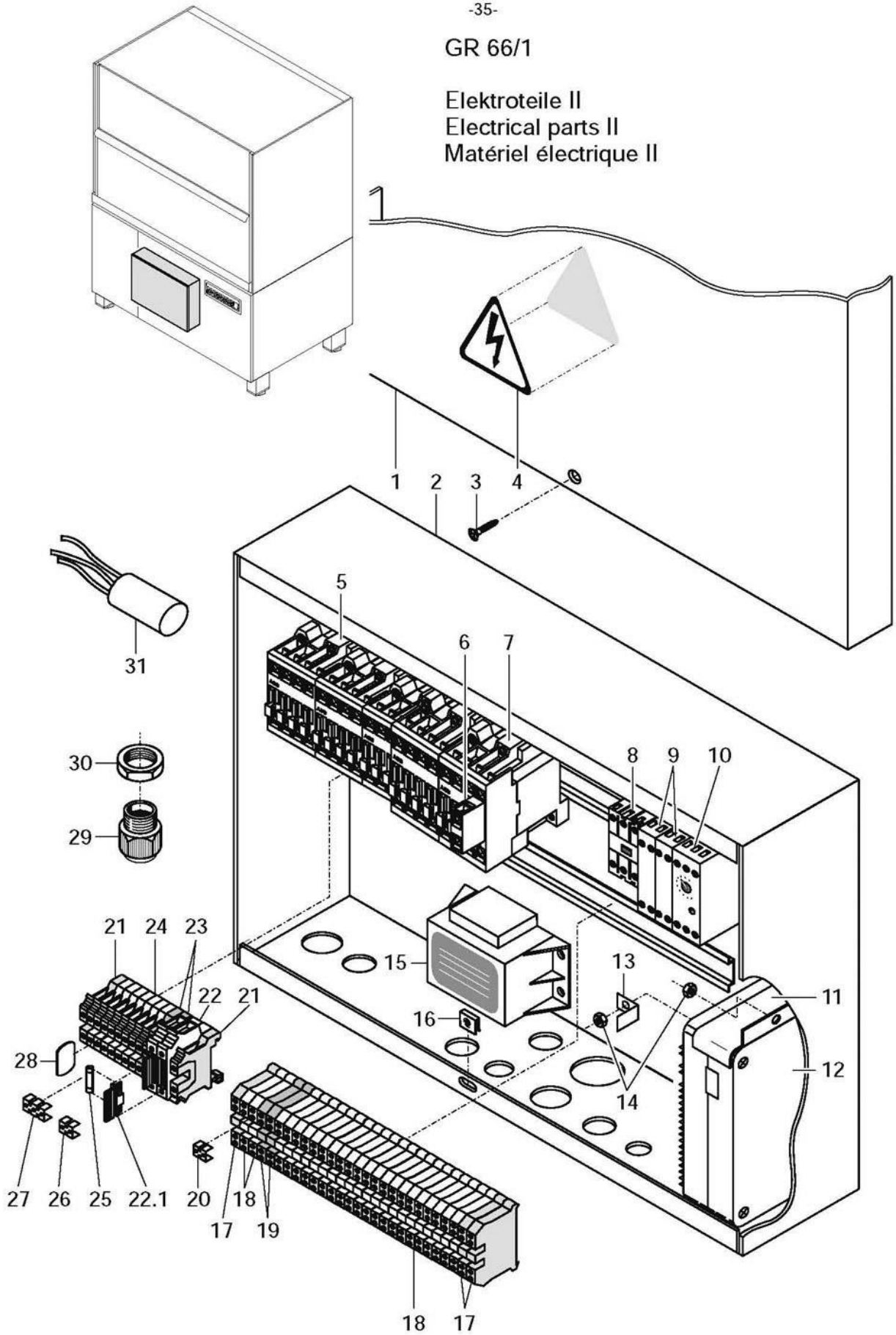
## GR 66/1

### Electrical parts I

Item	Designation	Part no.	Pc.	Notes
1	Clamping profile	61004234		
2	Switch panel	61004233		
3	S push-button; green 250 V AC	31 24 186		ON / OFF
4	Lamp; white; 230V AC	31 08 116		HEATING
5	Push-button; white; 250V	31 24 153		PROGRAMME I
6	Pushbutton; white 250 V	31 24 130		PROGRAMME II
7	Push-button; white; 250V	31 24 205		MANUAL WASH
8	Push-button; white; 250V	31 24 129		RINSING
9	Push-button, white	31 24 202		DRAIN VALVE
10	Push-button; white; 250V	31 24 197		COLD PRE-RINSING (Option)
11	Filler piece	31 24 187		
12	Level controller 300/100 ± 10	31 26 017		yellow
13	U-beam	65004803		
14	Washer; ø 5.3 x ø 12 x 0.8	22 02 213		
15	Hex nut; M 5 self-locking	21 05 302		
16	Clamping spring for level controller	31 26 001		
17	Cable binder; 162 x 2.5	31 20 014	2	
18	Hose; nom. dia. 5 x 1.5	40 01 024		per metre
19	Air chamber cpl.	55 04 024		incl. item 19.1
19.1	Seal; ø 26 x ø 36 x 2.0	27 01 003		
20	Spacer roller; ø 5.3 x ø 12 x 7	22 08 513	2	
21	Washer; ø 5.3 x ø 10 x 1.0	22 01 300		
22	Hex nut; M 4 self-locking	21 05 300		
23	Terminal strip; 9-pole	31 09 155		
24	Thermostat clip	55 19 011		
25	Hex nut; M 14 x 1 x 5	31 25 002		
26	Seal; ø 14.2 x ø 20 x 2.0	27 09 036		
27	Stuffing box for thermostat; M 14 x 1; SW19 x 15	31 25 001		
28	Safety thermostat; 140°C - 10K "OFF"	31 25 030	2	incl. nut
29	Thermostat; 1750mm long	31 25 013	2	incl. item 29.1
29.1	Stuffing box gland	31 25 012		
30	Pan-head screw; M 4 x 6	20 10 209		
31	Thermostat bracket	65001859		
n.p.	Thermostat sign, red	28 03 322		
n.p.	Boiler, sign	28 03 107		
n.p.	Tank sign	28 03 108		
32	Support cpl.	65003234		
33	Magnetic switch; 180-265V; 50/60Hz	31 24 221		

GR 66/1

Elektroteile II  
Electrical parts II  
Matériel électrique II



**GR 66/1**

Electrical parts II

Item	Designation	Part no.	Pc.	Notes
1	Switch box cover	65004117		
2	Switch box housing	65004114		
3	Sheet-metal screw; B 3,9 x 13	20 20 310		
4	High-voltage flash sign	28 03 009		
5	Contacto; 220-255V; 50/60Hz; A16	31 04 162	5	
	Contacto; 200V; 50/60Hz; A16	31 04 163	6	Japan
6	Contacto A30; 3H; 1Ö; 200V; 50/60Hz	31 04 165	2	Boiler 12kW
	Contacto A30; 220-255V; 50/60Hz	31 04 164	2	Japan; Boiler 9kW
7	Auxiliary switch; make contact	31 04 166		
8	Contacto relay 220-240 V; 50/60 Hz; CA2-SK11	31 04 114		
9	Coupling relay; 180-254V; 2A	31 04 139	2	Drain valve
10	Interval time-delay relay	31 04 150		
11	Holder for programme switch	61003088		
12	Electr. Programme switch; EPS 1.1; 230V	31 05 131		
	Electr. Programme switch; EPS 1.1; 200V; 240V	31 05 132		
13	Angle	65003612		
14	Hex nut; M 5 self-locking	21 05 302		
15	Transformer	31 15 020		
16	Sheet-metal nut; B 3,9	21 17 002		
17	Universal terminal; UDK4 gn-ye	31 09 153	3	
18	Double terminal; grey	31 09 151	24	
19	Universal terminal; UDK4 blau	31 09 152	2	
20	Fixed bridge; 2-pin; FB 2-6	31 09 126	2	
n.p.	Isolating disk; UKK3	31 09 169		
21	Universal terminal; USLKG 10 gn-ye	31 09 059	2	
22	Universal fuse terminal UK-Si	31 09 063	2	incl. item 22.1
22.1	Fused plug	31 09 072	2	
23	Universal terminal; UK 10 blue	31 09 058	2	
24	Universal terminal, grey UK 10	31 09 057	7	
25	Fine-wire fuse; 250V; 6.3A	31 11 043	4	
26	Fixed bridge; 2-pin; FB 10-8	31 09 128	3	
27	Fixed bridge; 3-pin; FB 10-8	31 09 138		
28	Isolating disk TS-K	31 09 066	3	
29	Cable gland; PG 29	31 10 123		
	Cable gland PG 21 with strain relief device	31 10 070	3	
	Cable gland PG 16 with strain relief device	31 10 049		
	Cable gland; PG 11	31 10 044		
n.p.	Screw cap; PG 16	31 10 025	2	
	Screw cap PG 9	31 10 021		
30	Hex nut; PG 29	31 10 047	2	
	Hex nut; PG 21	31 10 071	2	
	Hex nut; PG 16	31 10 110	3	
	Hex nut PG 11	31 10 045		
	Hex nut; PG 9	31 10 043		
31	Radio interf. suppress. capacitor; 0,27MF + 2 X 27000PF	31 13 078		
n.p.	Reducing ring; KUK 29/21	31 10 091		
n.p.	Feeder cable; 5 x 2,5mm <sup>2</sup> x 4000	31 23 138		
n.p.	Cable harness; heating / pump	65004124		
n.p.	Cable harness; solenoid valve	65004125		drain valves
n.p.	Cable harness; control	65004126		
n.p.	Cable harness; control panel	65004121		



## GR 66/1

### Cold water pre-rinsing (Option)

Item	Designation	Part no.	Pc.	Notes
1	Water inlet set	55 31 007		incl. item 1.1; 1.2
1.1	Seal; $\varnothing$ 20.5 x $\varnothing$ 28.5 x 2.0	27 01 002		
1.2	Hose clip; $\varnothing$ 14 - 24 x 9	28 02 108		
2	Shaped hose; nom. dia. 13 x 4	40 03 053		
3	Hose clip; $\varnothing$ 14 - 24 x 9	28 02 108		
4	Backflow restrictor, top	35 01 193	3	
5	Hose; nom. dia. 13.5 x 3.5 x 55	40 02 029		per metre
6	Cap nut; G 3/4" x $\varnothing$ 20; width A/F 30 x 14	29 07 203	2	
7	Hose connection piece; R 3/4" x 1/2"	29 06 222	2	
8	Seal; $\varnothing$ 14,2 x $\varnothing$ 22,5 x 1,5	27 09 007	2	
9	Backflow restrictor; DW 20	29 01 512		
10	Double nipple G 3/4" x 26; width A/F 27	30 11 207		
11	Hose; nom. dia. 13.5 x 3.5 x 225	40 02 029		per metre
12	Hose connection tee; $\varnothing$ 13	29 06 508		
13	Hose; nom. dia. 13.5 x 3.5 x 310	40 02 029		per metre
14	Hose; nom. dia. 13.5 x 3.5 x 650	40 02 029		per metre
15	Shaped hose; nom. dia. 13 x 4	62001434		anpassen
16	Hose; nom. dia. 13.5 x 3.5 x 45	40 02 029	2	per metre
17	Tee piece; $\varnothing$ 25 x $\varnothing$ 10	62001329		
18	Hose; nom. dia. 13.5 x 3.5 x 250	40 02 029		per metre
19	Hose clip; $\varnothing$ 24 - 44 x 12	28 02 309		
20	Hose elbow; nom. dia. 25 x 4.0	65004182		
	Fabric hose; nom. dia. 25 x 4.5 x	40 01 023		with AquaMatik
21	Hose; nom. dia. 13.5 x 3.5 x 250	40 02 029	2	per metre
22	Y-shaped hose connection piece; $\varnothing$ 13	29 06 526		
23	Hose; nom. dia. 13.5 x 3.5 x 250	40 02 029		per metre
24	Solenoid valve support	62001284		
25	Double solenoid valve; 220-240V; 50/60Hz	31 06 182		
	Double solenoid valve; 180-220V; 50/60Hz	31 06 200		
26	Washer; $\varnothing$ 4.3 x $\varnothing$ 12.0 x 1.0	22 05 300		
27	Pan-head screw; M 4 x 8	20 10 210		
28	Dirt trap	31 06 186		
29	Metal hose; nom. dia. 15 x 1500; G 3/4"	29 01 303		incl. item 31.1
29.1	Seal; $\varnothing$ 16 x $\varnothing$ 24 x 3.0	80002241	2	
30	Dirt trap cpl.	80002153		incl. item 32.1 - 32.3
30.1	Union stem; G 3/4" x 40; width A/F30	80002167		
30.2	Seal; $\varnothing$ 16 x $\varnothing$ 24 x 3.0	80002241	2	
30.3	Dirt trap	80002728		